

ise smart connect KNX Hue

Order no.: 1-0002-003

ise Individuelle Software-Entwicklung GmbH

Kaiserstraße 14  
26122 Oldenburg  
Germany

T +49 441 680 06 12  
F +49 441 680 06 15  
www.ise.de  
support@ise.de

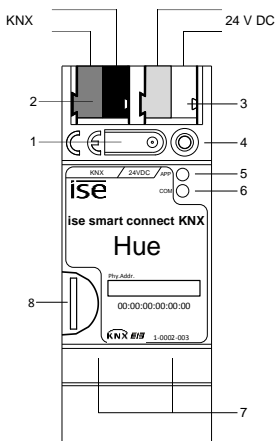


Figure 1

ise smart connect KNX Hue

**Safety instructions**

Installation and mounting of electrical devices may only be carried out by qualified electricians.

Failure to observe the instructions can result in damage to the device, fire or other dangers.

These instructions are part of the product and must stay with the customer.

**Device design**

ise smart connect KNX Hue

1. Programming button
2. KNX connection
3. External power supply connection
4. Programming-LED: red
5. APP = Indicator used for the state of the application
6. COM = Traffic (KNX and IP) communication indicator
7. Network connections
8. microSD-card (no function)

**Function**

**System Information**

This device is a product of the KNX system and complies with the KNX guidelines. Detailed specialist knowledge gained in KNX training courses is assumed for understanding. Functionality of the device is dependent upon software. Detailed information about software versions, specific ranges of functions and the software itself can be found in the manufacturer's product database. Planning, installation and start-up of the device is with the aid of KNX-certified software. The up-to-date product database and technical descriptions are available on our internet page.

**Proper use**

With the KNX system, the innovative KNX adapter lets you control up to 25 Hue lights via dimmer or switch. From warm to lively, the lamps' LED technology opens up the wide spectrum of light hues. Individual RGB values can be set for each individual lamp. The KNX control element lets you choose comfortably between complete light scenarios and separate control.

**Product features:**

- control up to 25 Hue lights via ise smart connect KNX and the Philips Hue-bridge
- separately control up to 25 Hue lights via dimmer or switch
- individual control of RGB colour hues possible
- choose comfortably between complete light scenarios and separate control
- simple connection of visualisation systems and facility management systems
- For ETS version 4.2 resp. 5.0.2 or higher

**Information for electricians**

**Installation and electrical connection**

**DANGER!**

**Electric shock if live parts are touched in the installation surroundings.  
Electric shock may lead to death.  
Isolate before working on the device.  
Cover up live parts in the vicinity!**

**Mounting the device**

Observe the temperature range. Ensure sufficient cooling.

- Snap the device onto a top-hat rail according to DIN EN 60715. See the illustration for installation position.
- Connect the external power supply to the connection terminal (3). We recommend: use the white-yellow connection terminal.
- Connect the KNX line with the red-black bus terminal (2).
- Attach the cover cap over the KNX/external power supply connection.
- Connect the network connection to the RJ pin jack with the RJ45 plug (7).

**Attach the cover cap, figure 2**

A cover cap must be attached to protect the bus connection from dangerous voltages in the connection area.

- Guide the bus line to the rear.
- Attach the cover cap over the bus terminal until it engages.

**Remove the cover cap, figure 3**

- Press the cover cap on the sides and remove.

**Start-up**

- Briefly press the programming button (1). Programming LED (4) lights up red.
- Assign the physical address. Programming LED (4) goes out.
- Label the device with the physical address.
- Load the application software, parameters etc.

**Appendix**

**Technical data**

KNX medium	TP1
Start-up mode	S-Mode (ETS)
KNX supply	DC 21...30 V SELV
KNX current consumption	typ. 2,5mA
KNX connection	Bus connection terminal
External supply Voltage	DC 24...30 V
Power consumption	2 W (with DC 24 V)
Connection	Connection terminal
IP communication	Ethernet 10/100 BaseT (10/100 Mbit/s)
IP connection	RJ45 pin jack
Ambient temperature	0 °C up to +45 °C
Storage temperature	-25 °C up to +70 °C
Installation width	36 mm (2 HP)
microSD-card	no function

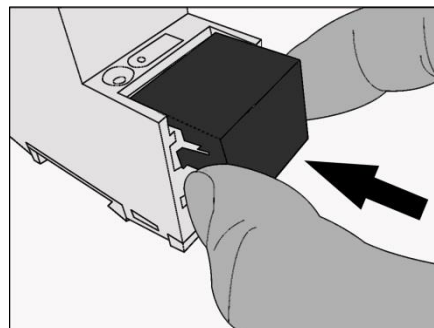


Figure 2

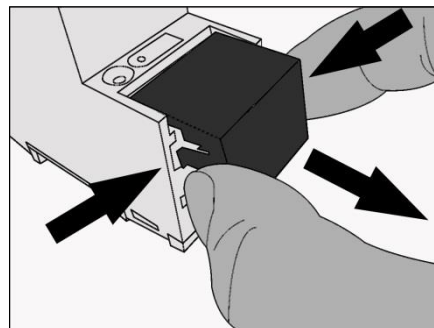


Figure 3

**Warranty**

We provide a warranty in accordance with the statutory requirements. Please send the device postage paid with error description back to us.

ise Individuelle Software-Entwicklung GmbH

Kaiserstraße 14  
26122 Oldenburg  
Germany