



Status of the documentation:

09.12.2014

Print: 22.12.2014

Instruction Manual

ise Firmware Update Tool

Table of contents

1.1	General Information.....	3
1.2	Functionality	3
1.3	Source.....	3
2	<u>Use of the ise Firmware Update Tool.....</u>	4
2.1	Loading a firmware update file	4
2.2	Searching for devices available for an update	4
2.3	Update device firmware.....	5
2.4	Use of the ise Firmware Update Tool with Secure Device Access.....	5

1.1 General Information

1.2 Functionality

The ise Firmware Update Tool is designed to provide all devices from the ise smart connect KNX series with a new firmware. The program is available in German and English language. The update of the device software (firmware) can be achieved in the local network (LAN) or via the ise smart connect KNX Secure over the internet.

A firmware update file contains the complete runtime environment of the software including the operating system. The file name is made up as follows:

<OrderNumber>_firmware_iseSmartConnectKNX_<ProductName>_<Version>.zip

For a ise smart connect KNX Sonos the firmware file could look like this:

1-0001-002_firmware_iseSmartConnectKNX_Sonos_2.0.575.zip

1.3 Source

The ise Firmware Update Tool is available in the product area of the website www.ise.de.

2 Use of the ise Firmware Update Tool

2.1 Loading a firmware update file

After downloading the file from the website www.ise.de you can make it available in the ise Firmware Update Tool by clicking the button „Add a firmware ...“. The Tool restarts automatically after adding a new firmware.

2.2 Searching for devices available for an update

After starting the ise Firmware Update Tool it begins automatically to search for devices in the network. If no device is found, please check whether the device can be reached in the webbrowser and repeat the search by clicking on the „Search“ button. Depending on your network configuration, it sometimes may be necessary to click several times on the “Search” button until the device is found.

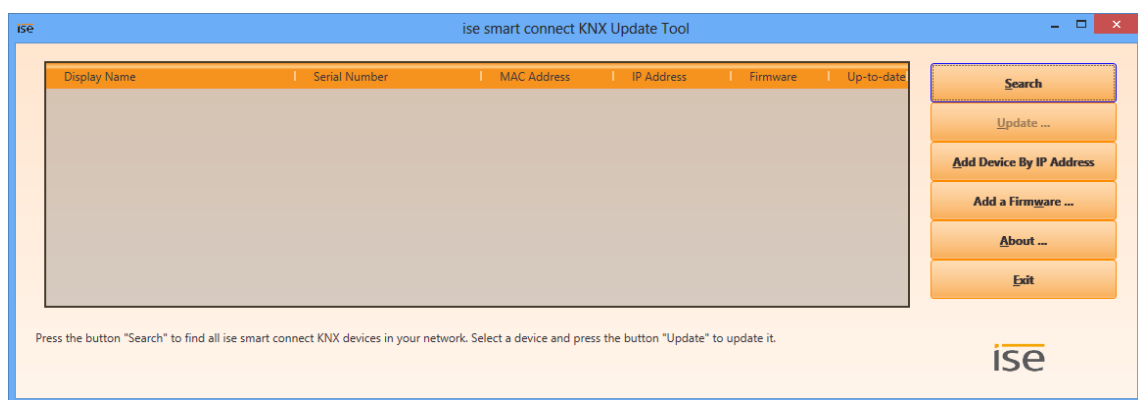


Figure 1: ise Firmware Update Tool
Search for devices available for an update

As soon as the device is found either locally (LAN) or over SDA through the SDA Windows Client, it appears within the ise Firmware Update Tool displaying its MAC and IP address and the currently installed firmware version. If a new firmware is available for a device, the last column displays „No“. In this case you can select the row with the device and update its firmware. In the following example, an update for the ise smart connect KNX Sonos is available. Should you have more than one device in the same network, please use the MAC address for identification. The MAC address is also printed on the device.

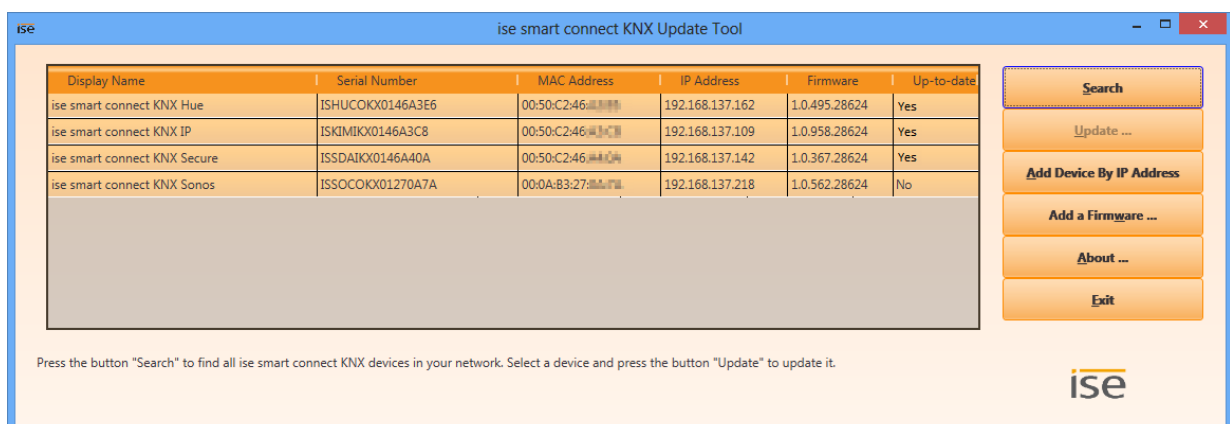


Figure 2: ise Firmware Update Tool
View of the currently used firmware of all devices of the ise smart connect KNX series

2.3 Update device firmware

The update is started by selecting the specific device and pressing the „Update...“ button. The duration of the procedure is about 15 minutes (in LAN), over SDA depending on the connection at least 30 minutes. During the firmware update in LAN the progress bar lingers at 99% for a couple of minutes. In this time the device restarts and resynchronizes itself internally before it reports back its done. If the firmware update is done via SDA, the ise Firmware Update Tool does not wait for the device to report back after the restart. Therefore please close the ise Firmware Update Tool and close the connection to the SDA Connector in the SDA Windows Client. After a couple of minutes connect again with the SDA connector through the SDA Windows Client and restart the ise Firmware Update Tool. You will then find the devices updated. After update and restart you can also check the new version on the device website over LAN or over SDA under "Device status".

2.4 Use of the ise Firmware Update Tool with Secure Device Access

If you want to perform the firmware update with the ise smart connect KNX Secure securely over the Internet, you will have to start the SDA Windows Client first (see Product manual of the ise smart connect KNX Secure). Before connecting in the SDA Client Software, you have to activate the checkbox "Enable ise smart connect KNX remote firmware update" (see FigureFigure 3). On the same computer start now the ise Firmware Update Tool and use the "Search" button.

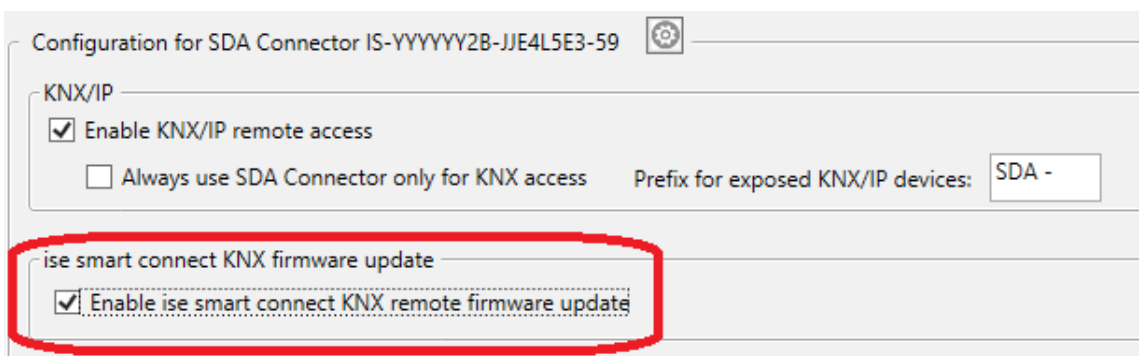


Figure 3: SDA Windows Client
Option „Enable ise smart connect KNX remote firmware update“